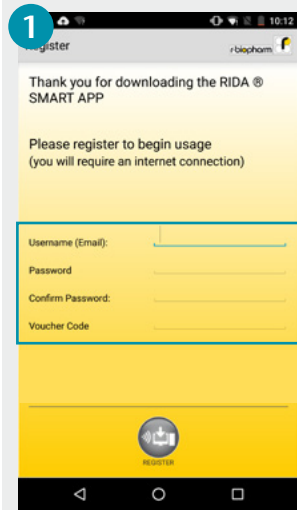
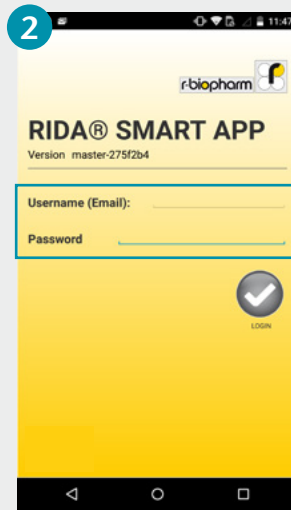


RIDA® SMART APP – quick starter guide

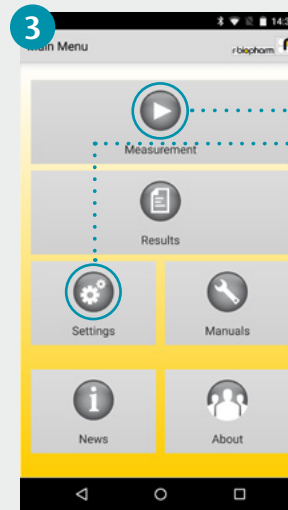
For detailed information visit us at app.r-biopharm.com



1 After installing the App on the smartphone, complete the Super User registration with your username, password and the voucher code.

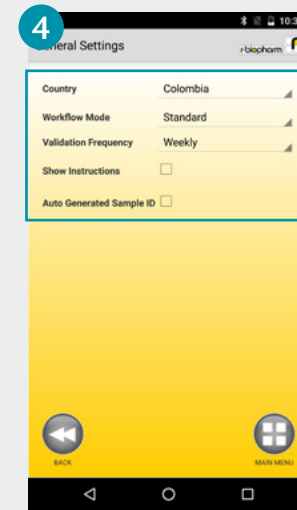


2 Press the “Login” button to confirm details. You will then be directed to the main menu.

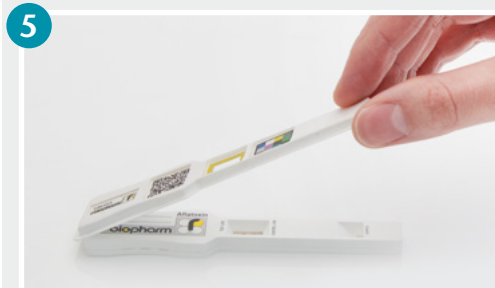


3 To prepare the App for operation, you first need to set it up from the “Settings” menu.

If you’ve already set up the app before, start by pressing the “Measurement” button.



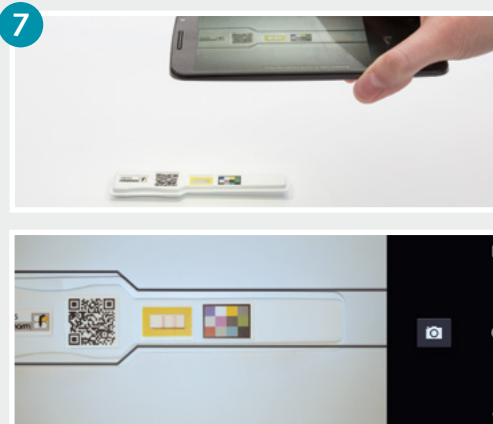
4 Define your country, workflow mode, validation frequency. The settings are saved automatically.



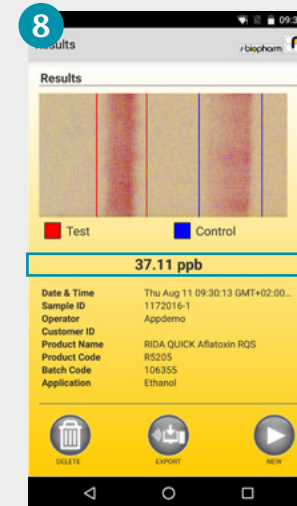
5 Position the cover strip, available in the kit, on the Lateral Flow test strip. Afterwards, choose the button “Measurement” in the main menu to start a measurement.



6 Define the sample (“Sample ID”) and the customer (“Customer ID”) in the menu “Measurement.” Select the batch information or alternatively scan the QR code on the cover strip, choose your application and confirm your selection by pressing the “Next” button.



7 Scan the test strip. Make sure that the strip is placed within the black marking. After correct alignment of the smartphone, press the camera button. The camera will auto-focus and capture the image.



8 The measurement is displayed and automatically recorded. You can forward the test results to your e-mail address or send them to a supported printer by pressing the button “Export”.